

DRAFT

Michigan Statewide Tolling Feasibility Analysis Screening Criteria Data

IN ACCORDANCE WITH
PUBLIC ACT 140 OF 2020 AND
PUBLIC ACT 73 OF 2022



December 21, 2022



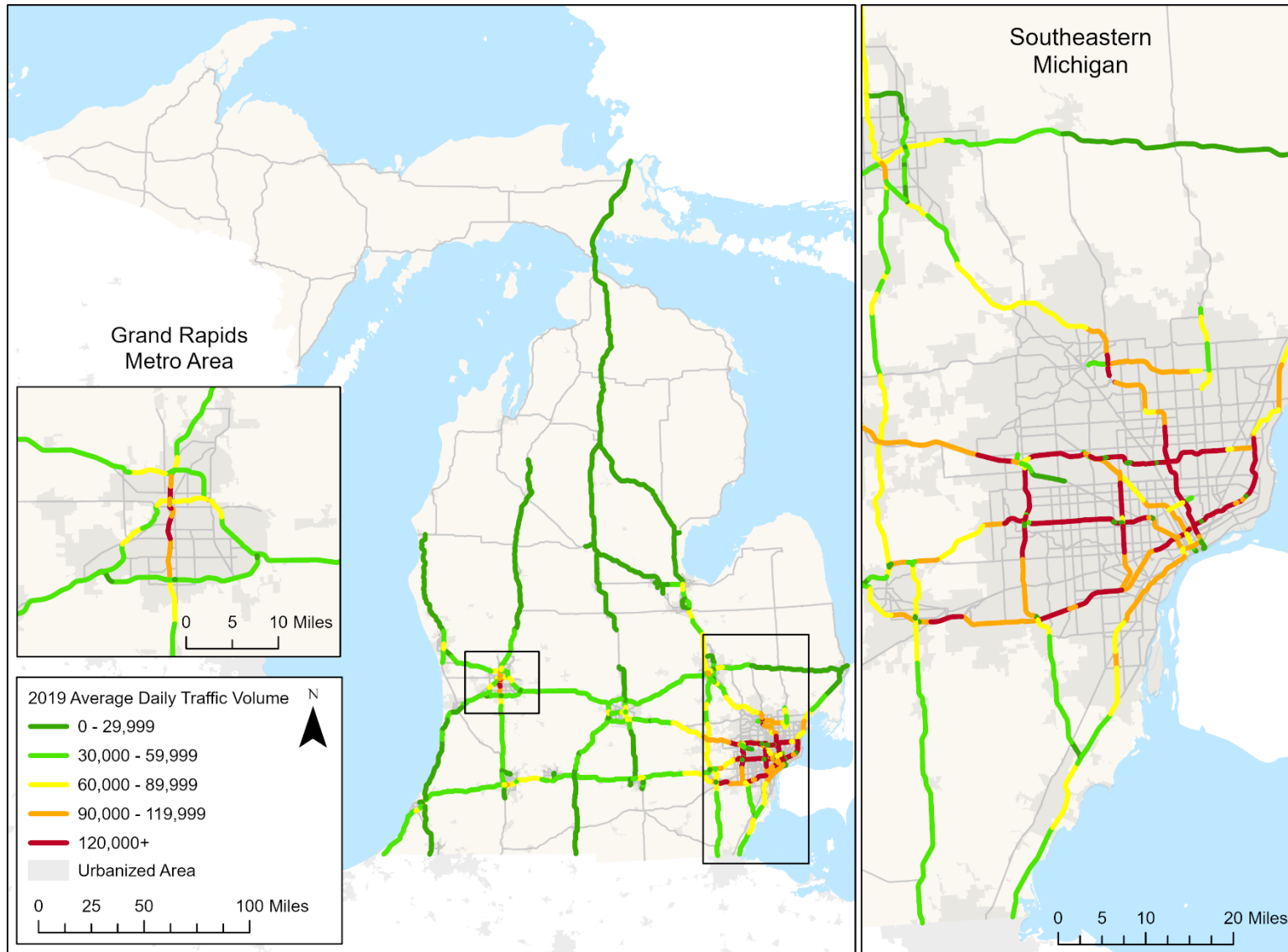
Screening Criteria Data

This supporting document to the Michigan Statewide Tolling Study: Feasibility Analysis Report includes a series of maps with data used as part of the Feasibility Analysis Phase 1 and Phase 2 screening processes. The list of maps is below

List of Figures

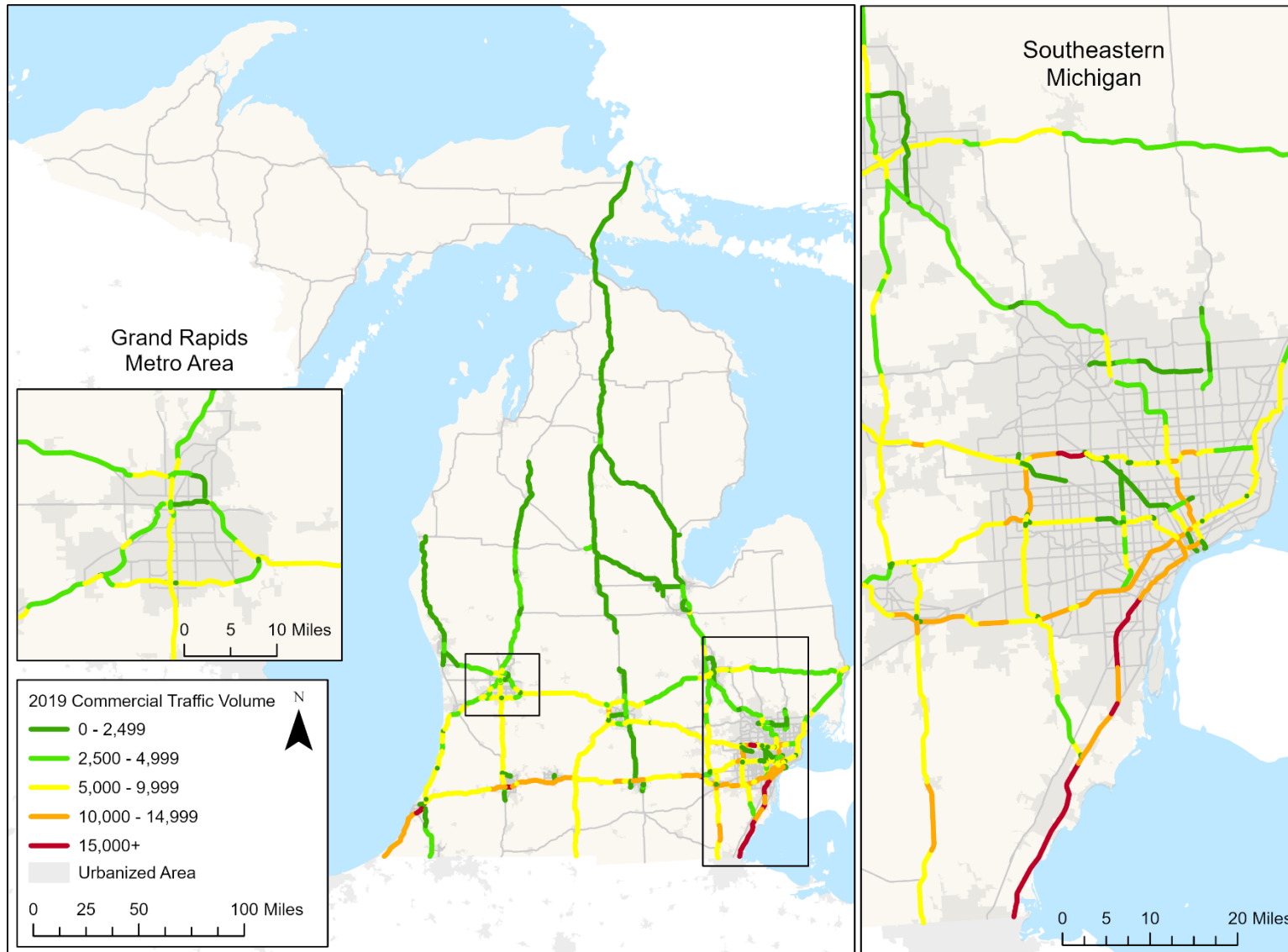
Figure 1: Total Average Daily Traffic	3
Figure 2: Commercial Average Daily Traffic.....	4
Figure 3: Roadway Condition by Remaining Service Life.....	5
Figure 4: Bridge Condition by National Bridge Inventory Rating	6
Figure 5: Locations with Significant Average Weekday AM or PM Peak Hour Recurring Congestion.....	7
Figure 6: Percent Minority Residents.....	8
Figure 7: Poverty Rate.....	9
Figure 8: Economic Connectivity in Terms of Future Projected Jobs Per Square Mile	10

Figure 1: Total Average Daily Traffic



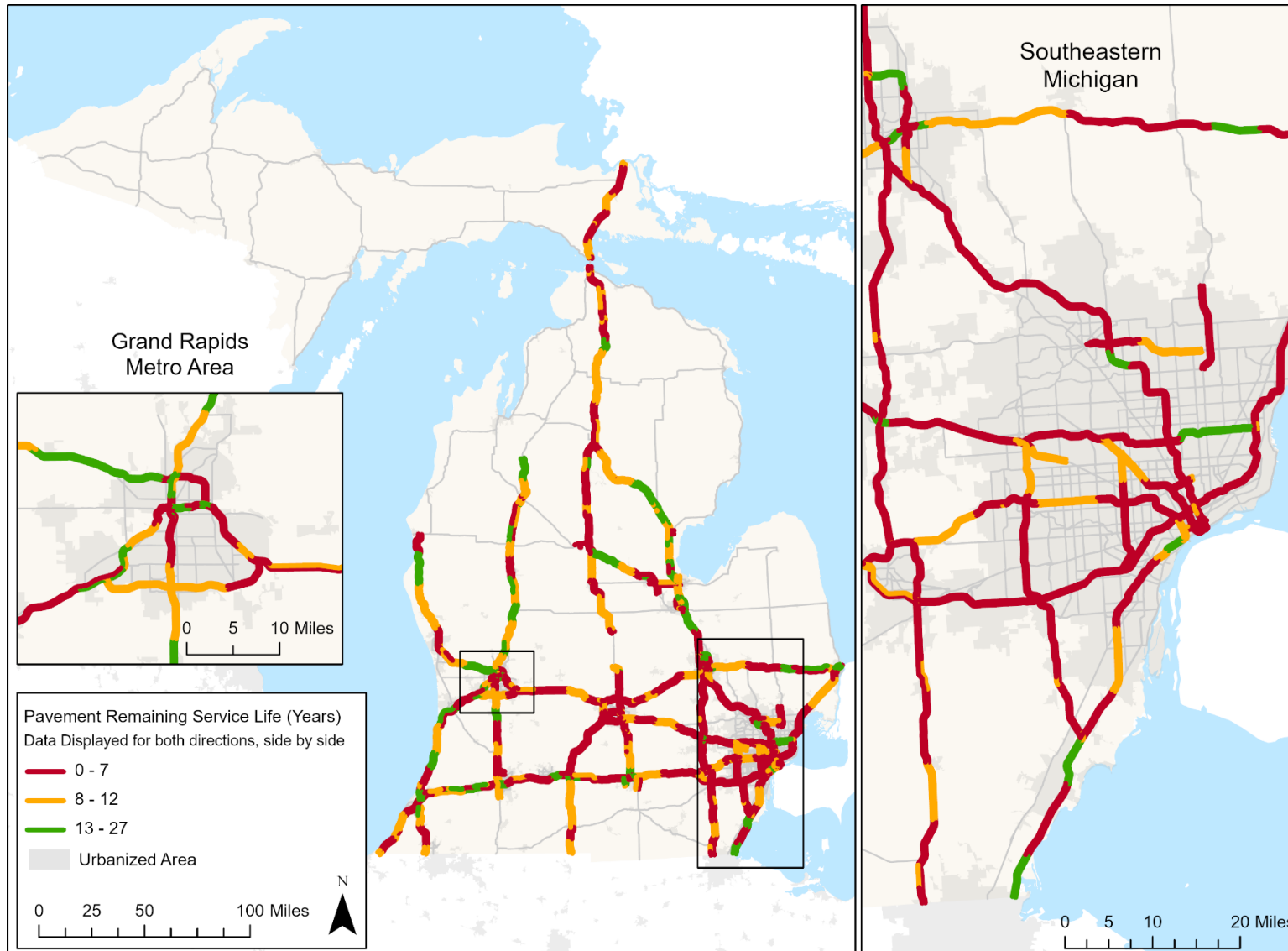
Data Source: 2019 Michigan Department of Transportation Traffic Volumes GIS Layer. This was the latest data file available at the time of the Feasibility Analysis.

Figure 2: Commercial Average Daily Traffic



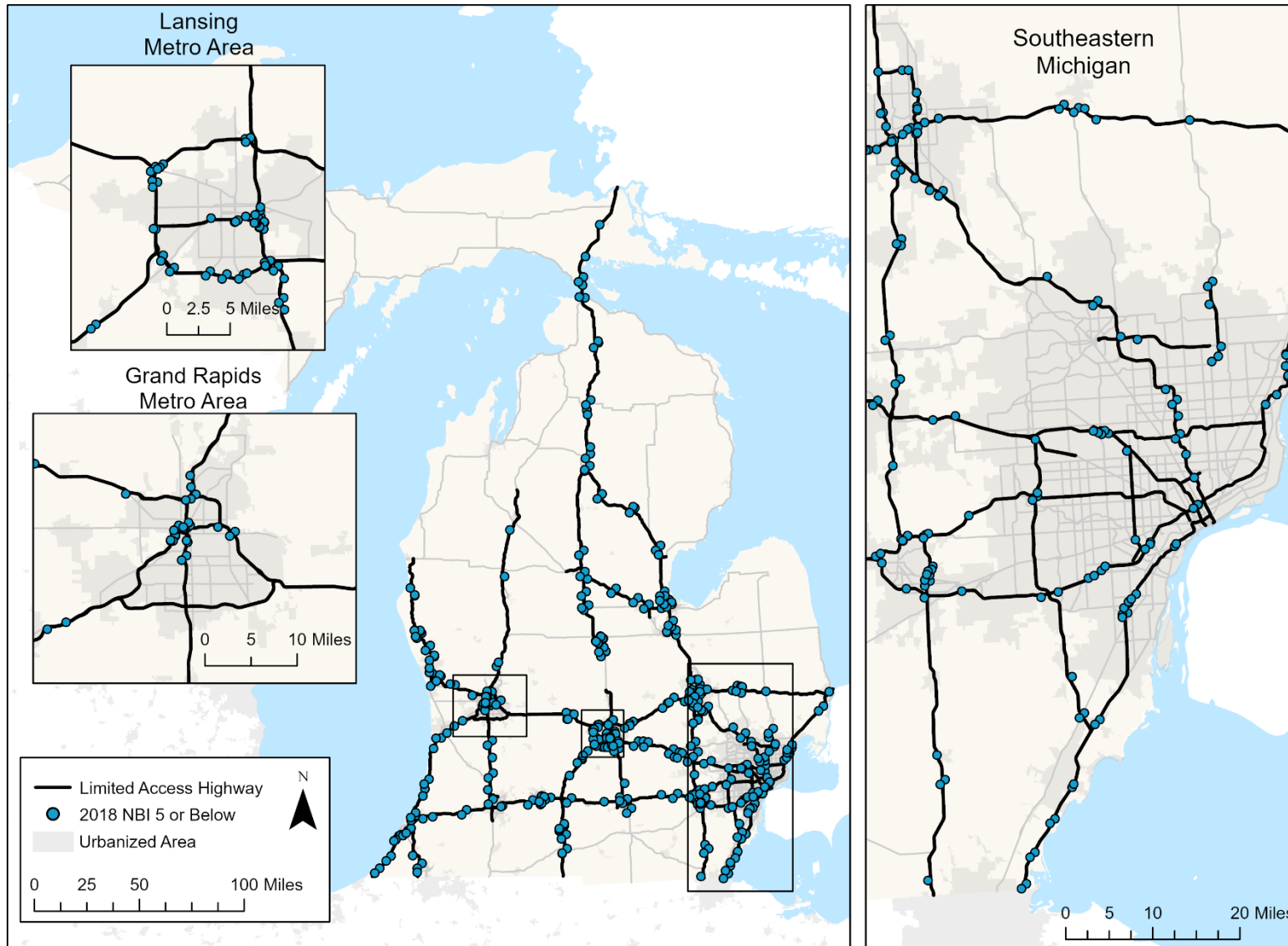
Data Source: 2019 Michigan Department of Transportation Traffic Volumes GIS Layer. This was the latest data file available at the time of the Feasibility Analysis.

Figure 3: Roadway Condition by Remaining Service Life



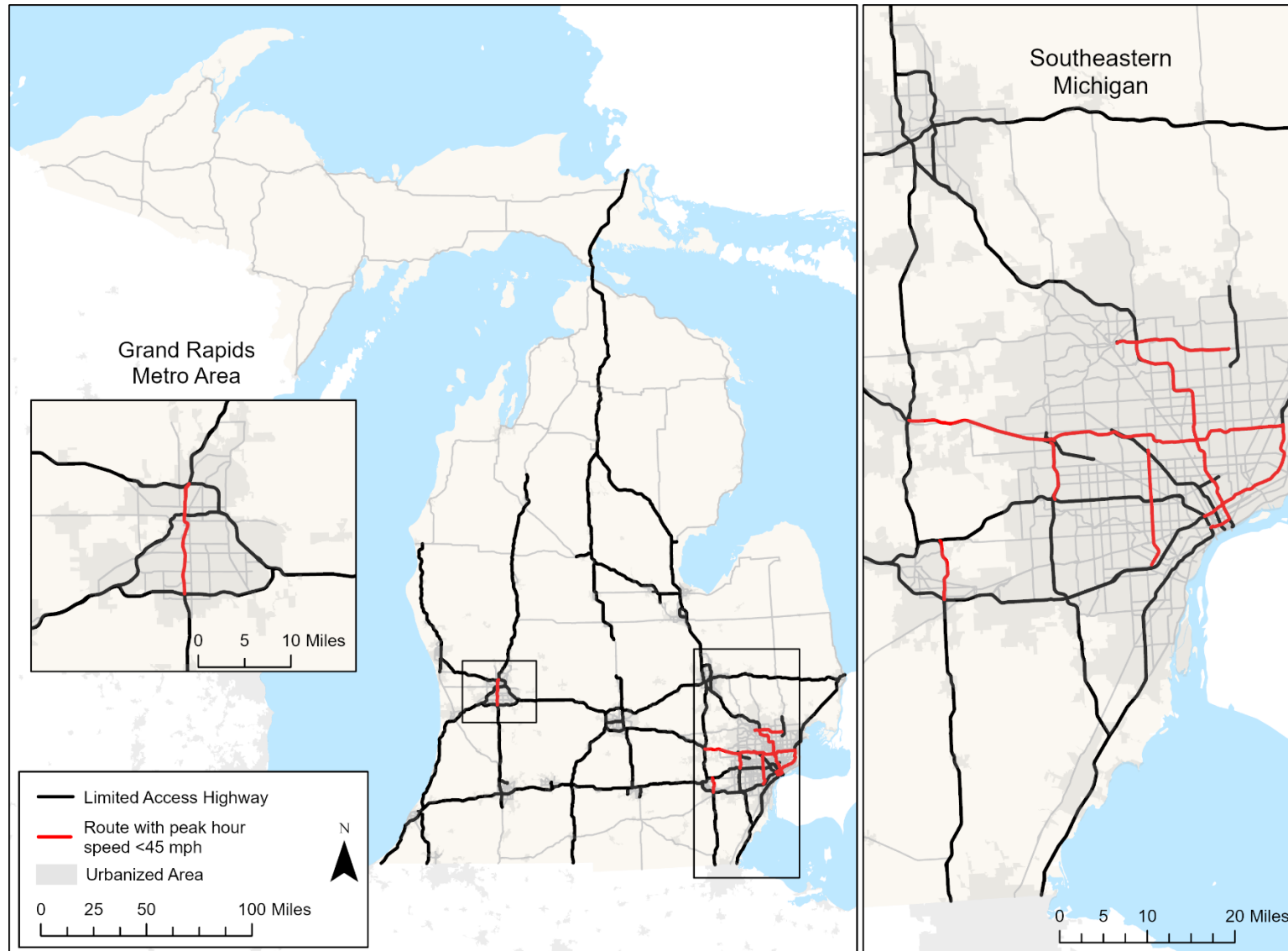
Data Source: Michigan Department of Transportation pavement remaining service life data from file dated 2019. This was the latest data file available at the time of the Feasibility Analysis.

Figure 4: Bridge Condition by National Bridge Inventory Rating



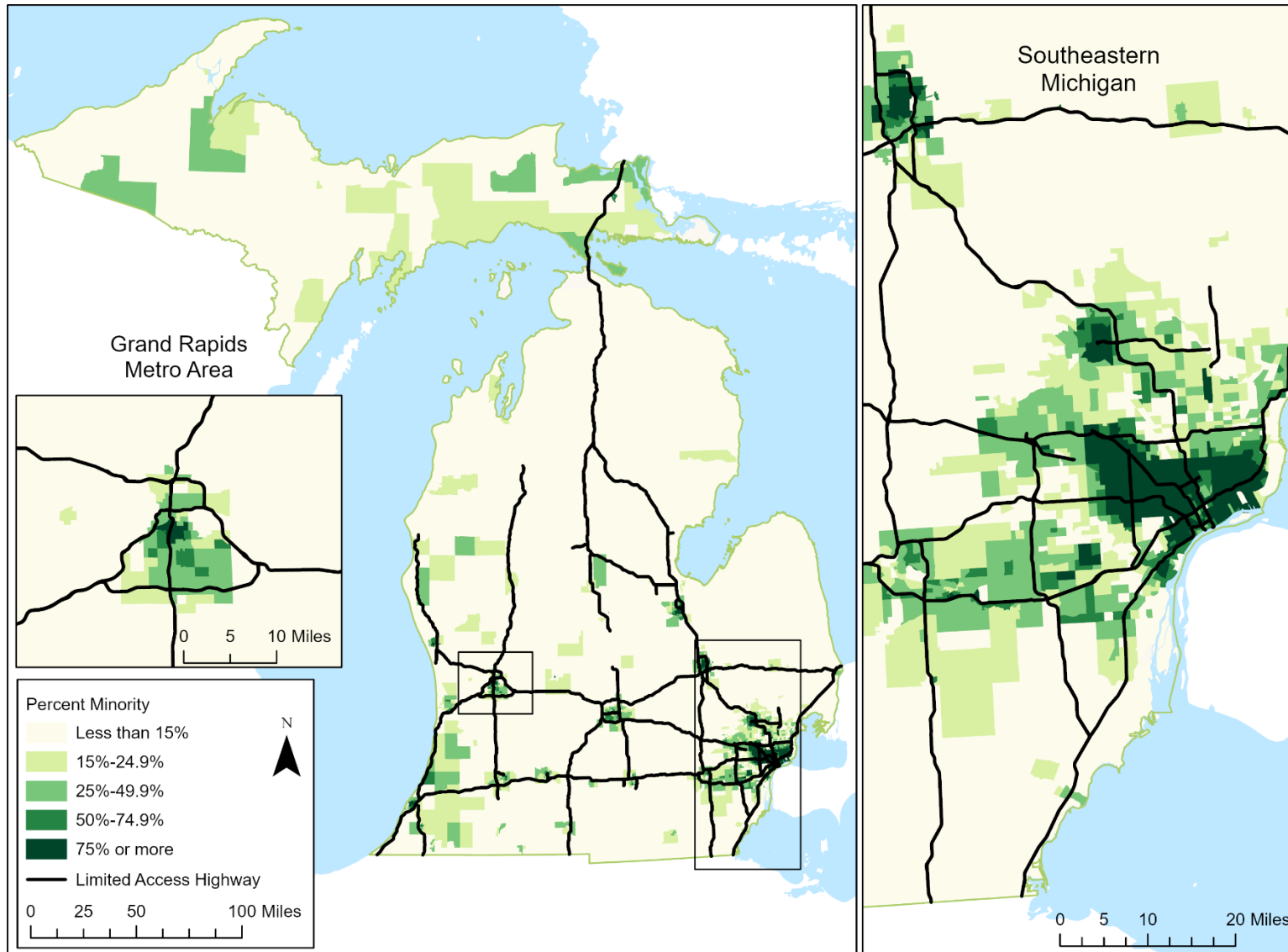
Data Source: Federal Highway Administration 2018 National Bridge Inventory file. Only bridges rated five or below where the highway being studied is over another roadway, railroad, water, or another feature are included. Bridges over the limited access highway being studied are not included. This was the latest data available at the time of the Feasibility Analysis.

Figure 5: Locations with Significant Average Weekday AM or PM Peak Hour Recurring Congestion



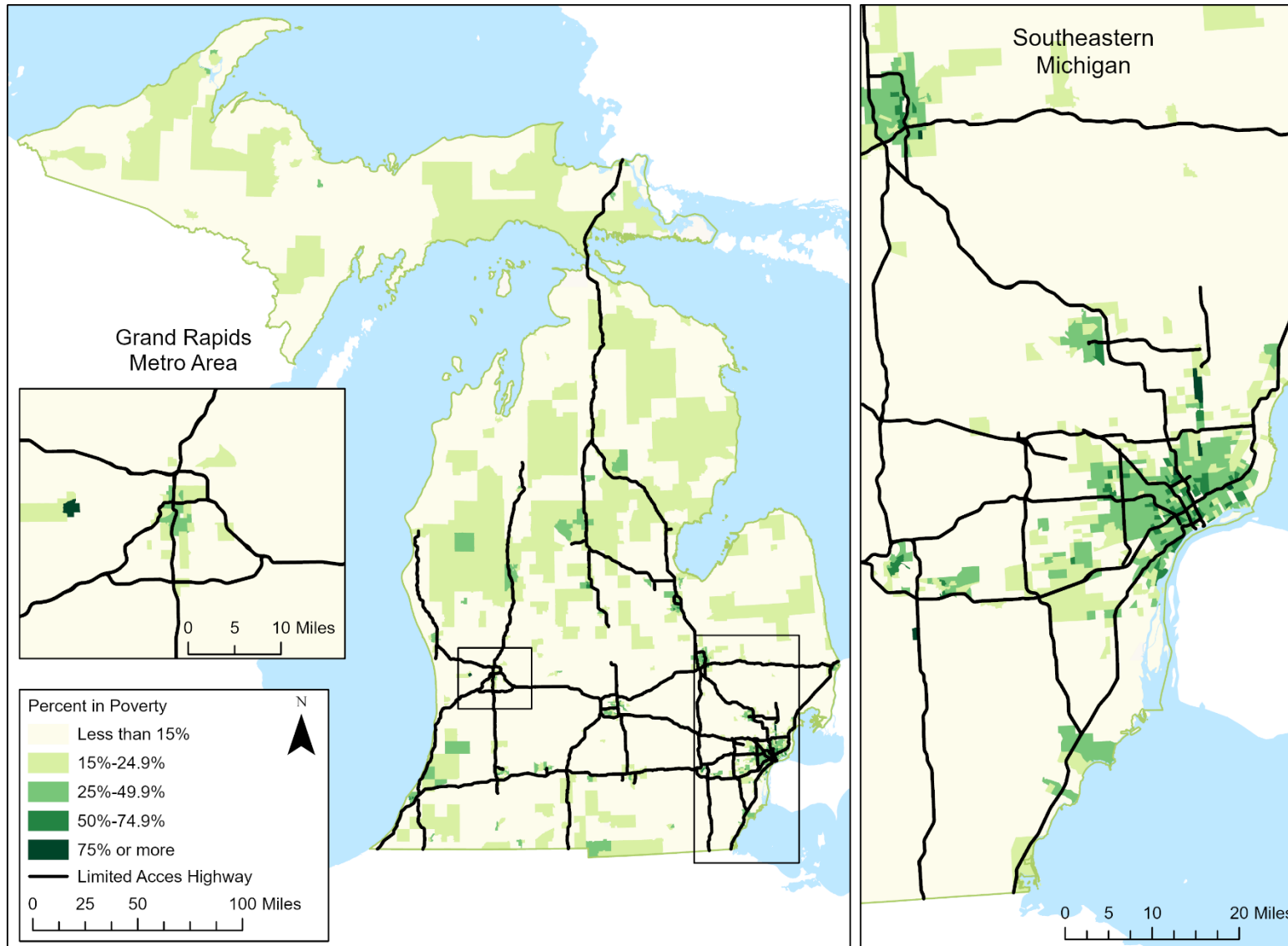
Data Source: 2019 travel time data from Michigan Department of Transportation/Wayne State University. The data were used in the 2019 MDOT Congestion and Reliability Report. This was the latest data file available at the time of the Feasibility Analysis.

Figure 6: Percent Minority Residents



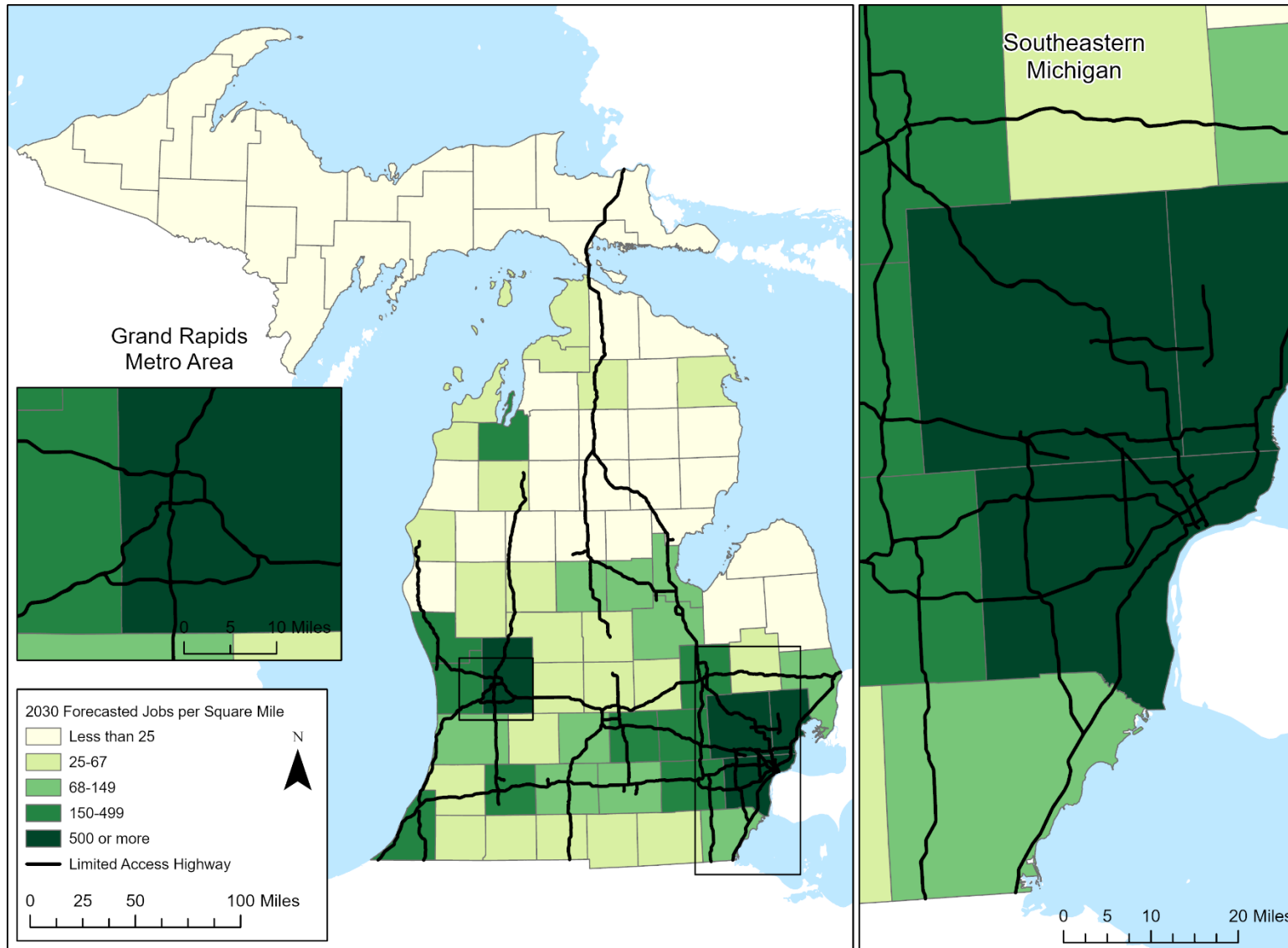
Data Source: U.S. Census Bureau 2019 American Community Survey, Table B03002. Minority residents were defined as Black, Hispanic, Asian American, American Indian, or Alaskan Natives. This was the latest data available at the time of the Feasibility Analysis.

Figure 7: Poverty Rate



Data Source: U.S. Census Bureau 2019 American Community Survey, Table B17021. Poverty was defined based on poverty guidelines from the Department of Health and Human Services which varies based on the number of persons in a family or household. This was the latest data available at the time of the Feasibility Analysis.

Figure 8: Economic Connectivity in Terms of Future Projected Jobs Per Square Mile



Data Source: 2030 Forecasted Employment from Woods & Poole 2020 County Demographic and Economic Projections. This was the latest data available at the time of the Feasibility Analysis.